

CITY-SKIP LOADER



GERGEN 
Kipper- und Fahrzeugbau



WITH A FIRM EYE ON THE FUTURE FOR GENERATIONS

For more than 80 years we have been developing transport and disposal solutions for your success! The skip loaders from GERGEN set the standards. All outstanding developments of the last decades have been created at our location in Saarland, Germany.

GERGEN builds city skip loaders of the best quality, constantly adapted to the new market requirements and equipped with outstanding details. This is what makes GERGEN's city skip loaders unique.



Leo Gergen
1907-1980



Hans-Georg, Ottmar and
Engelbert Gergen
1967-2013



Arndt Kreutzer
Executive Partner
From 2013


CHALLENGE US

WE SHOW YOU WHAT WE CAN DO

WE LOVE PROGRESS



THE NEW SERIES

A photograph of a Gergen City skip loader, a small orange and black truck with a hydraulic skip mechanism. The skip is raised, showing its metal structure and chains. The background shows a clear blue sky, green trees, and a building with a sign that says "BESUCHER".

It has always been our endeavour to incorporate the practical experience of our customers into the development. This is achieved through a permanent exchange of ideas between the operators, their drivers and our design team.

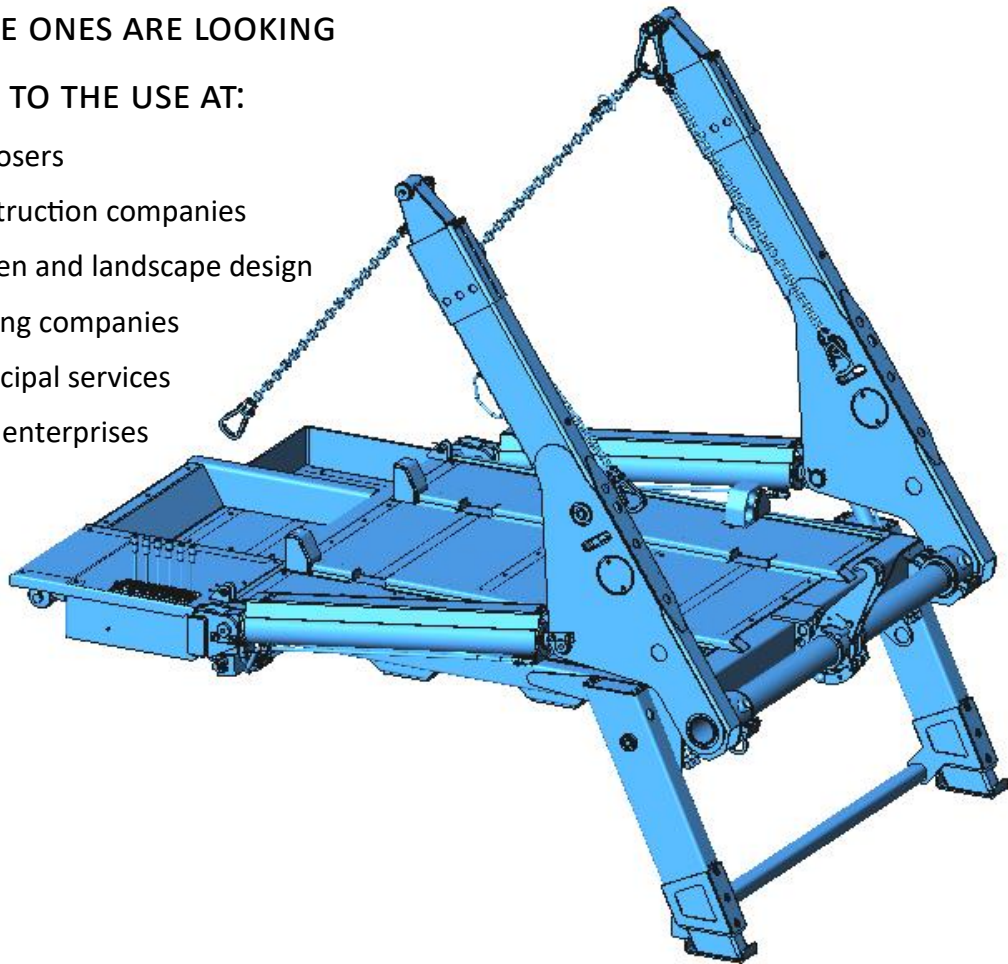
City skip loader combines the advantages of GERGEN products that have been tried and tested since the 1950s with a very low tare weight and a high payload.

GERGEN City skip loader awakes emotions through modern design in a perfect shaping of the basic structure.

CITY-SKIP LOADER

OUR LITTLE ONES ARE LOOKING
FORWARD TO THE USE AT:

- Disposers
- Construction companies
- Garden and landscape design
- Roofing companies
- Municipal services
- Craft enterprises

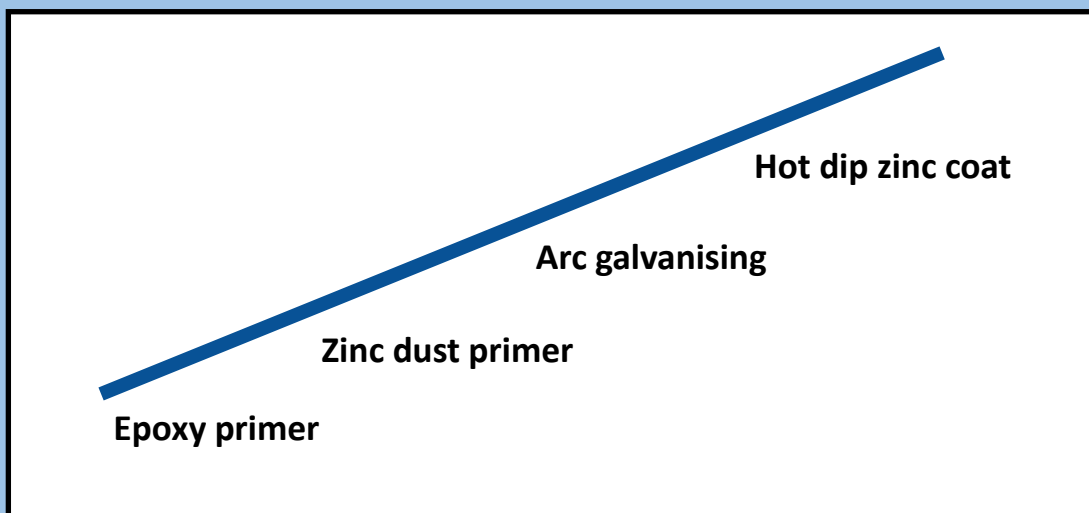


GERGEN 
Kipper- und Fahrzeugbau

TECHNICAL DATA

Models:	TAK4 - TAK8 (SW and AX) Helios 8 - Helios 13
ADMISSIBLE TOTAL WEIGHT:	3,5 to 14 t
TECHNICAL LIFTING CAPACITY:	2,5 to 7,5 t
CONSTRUCTION WEIGHT:	800 to 2000 kg
RECOMMENDED WHEELBASE:	2500 to 3700 mm
CONTAINER SIZES:	2 to 10 m ³ (DIN 30720 and DIN 30735)

DURABILITY OF THE CORROSION PROTECTION



TAK 4 - 6 - 8 - 13



GERGEN 
Kipper- und Fahrzeugbau

ADONIS CITY-SERIES OF CONSTRUCTION



THE NEW GERGEN TAK

The first generation of the telescopic skip loaders with gooseneck opened a trend-setting development.

Lighter and deeper for use with different container sizes, with dump function.

Through unrestrained innovative power, numerous inventions for new products have been created, which make a skip loader from GERGEN unmistakable to this day.

No matter whether you need the heaviest duty or want to go "high up" - we have the "tailor-made suit" for you with the CITY Skip Loaders!

TYPICALLY GERGEN...



1.

1. Hydraulic CONTAINER
LOCKING DEVICE - Optional

2. Optimum corrosion protection of the entire superstructure — Optional.

3. STOWAGE TROUGH: In front of the loading bridge, a stowage trough that is level with the floor assembly and adapted to the vehicle is standard. This enables optimum utilisation of the space and the stowage area. Storage box in different versions for optimum use of free space - Optional

Optionally also with lid or high aluminium storage box.

4. PREMIUM STORAGE BOXES from Gepro-BOX — Optional.



2.



4.

3.

GERGEN 
Kipper- und Fahrzeugbau

MANY USEFUL DETAILS
FOR PRECISE AND FAST WORK.

5. Accessible and low-MAINTENANCE COMPONENTS.

6. 3-FOLD TIPPING HOOK SYSTEM middle hook separately controllable – Optional

These are mounted with 2 half-shells mounted on the rotary shaft.

This allows a quick from the 1- to the 3-hook system is possible.



GERGEN 
Kipper- und Fahrzeugbau

TAK 6 ADONIS

7. SUPPORT FEET: Separately controllable hot-dip zinc coated support feet. Optional: castors or pendulum plates and shims in galvanised plate holders.

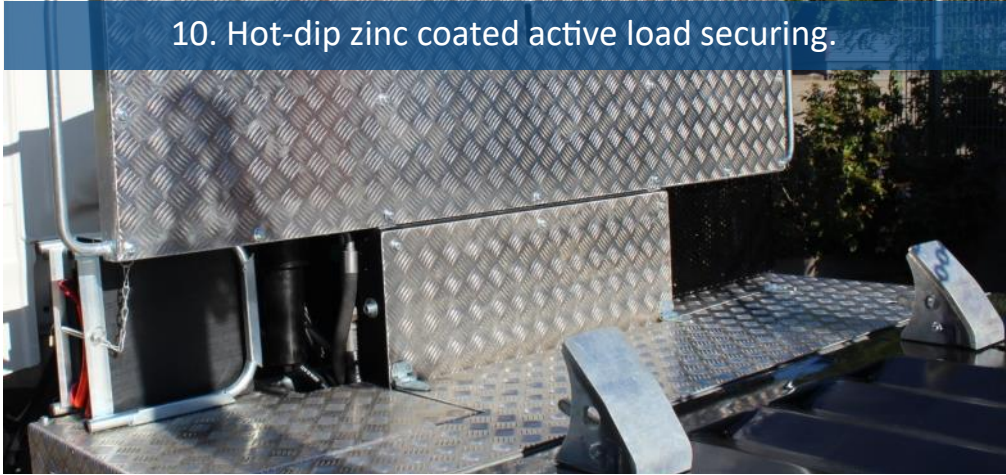
8. CYLINDER PROTECTION COVER and lighting support made of aluminium chequer plate.

9. SEPARATELY CONTROLLABLE TELESCOPIC ARMS offer maximum flexibility even in the smallest of spaces. This allows you to position the containers unerringly without annoying re-parking.



INNOVATIONS THAT PAY OFF

10. Hot-dip zinc coated active load securing.



11.



11. REINFORCED KEY PLATE: with hot-dip zinc coated deflectors with variable stop. These adapt effortlessly to different trough shapes.

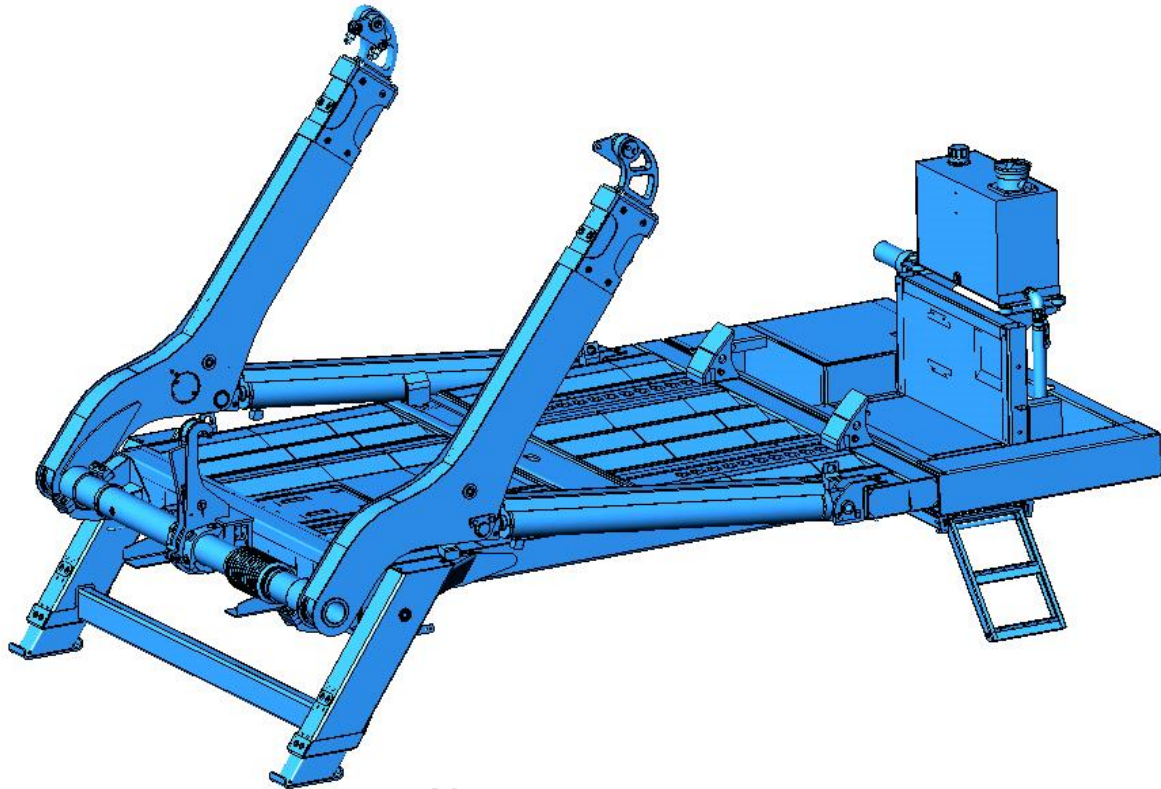
Optional: lashing eyes for secure clamping.

12. The HOT-DIP ZINC COATED 2-way hydraulic container locking system enables the safe transport of containers of different sizes and refuse compactors in accordance with the latest VDI guidelines and without additional tensioning of the chains, by means of extended telescopes.



12.

ADONIS 6 AX WITH EXTENDIBLE ARM



NO FEAR OF LARGE

For the use of containers according to DIN 30735 from 2 – 5.0 m³, according to DIN 30720 part 1 up to 7.0 m³. We also offer you the advantages of the large skip loader series in our small ones. The 10 m³ container can be transported depending on the wheelbase, but can only be tipped to a limited extent. (Minicontainer on request) extendable from 1,740 mm to up to 2,040 mm internal width.

- Single or triple tipping hooks .
- Heavy-duty attachments hot-dip zinc coated as standard.
- Maintenance openings for reduced maintenance effort.
- Many other attachments and accessories are available for all TAK series.



TAK 6 AX: Extended arms

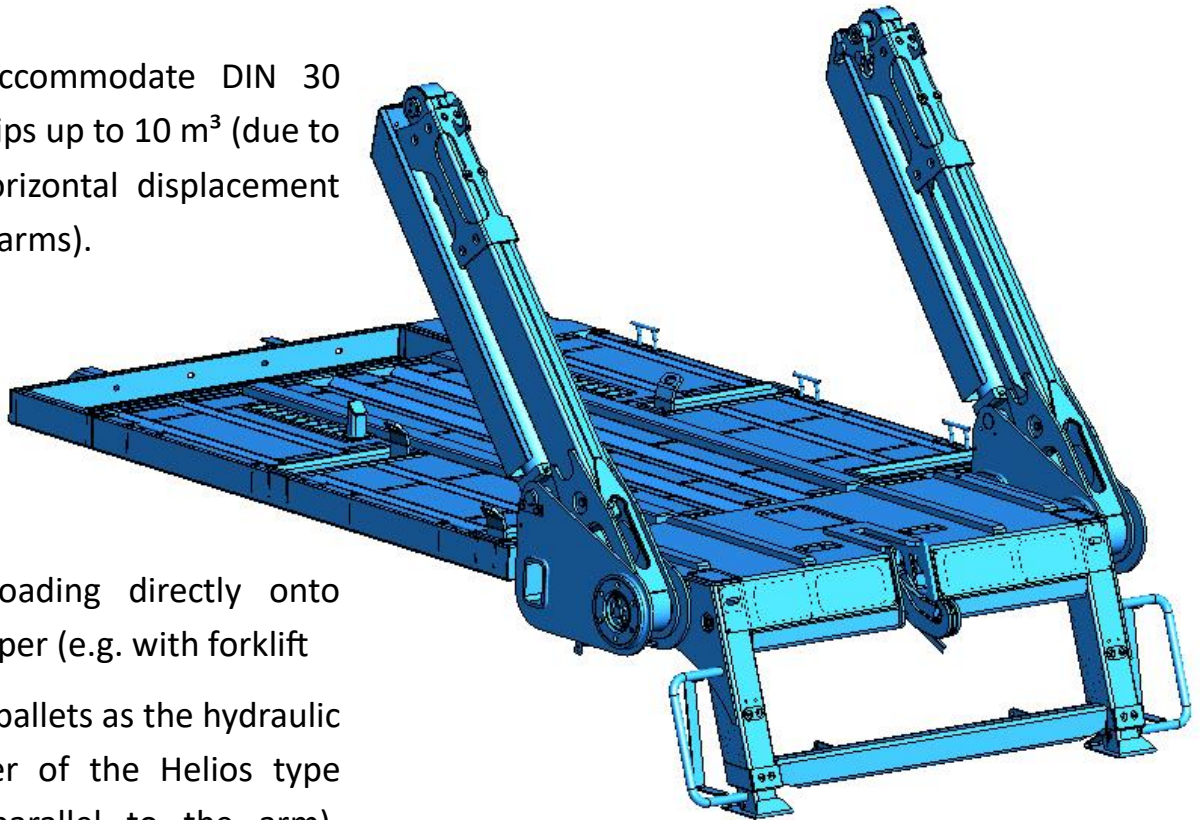


TAK 6 AX: Retracted arms

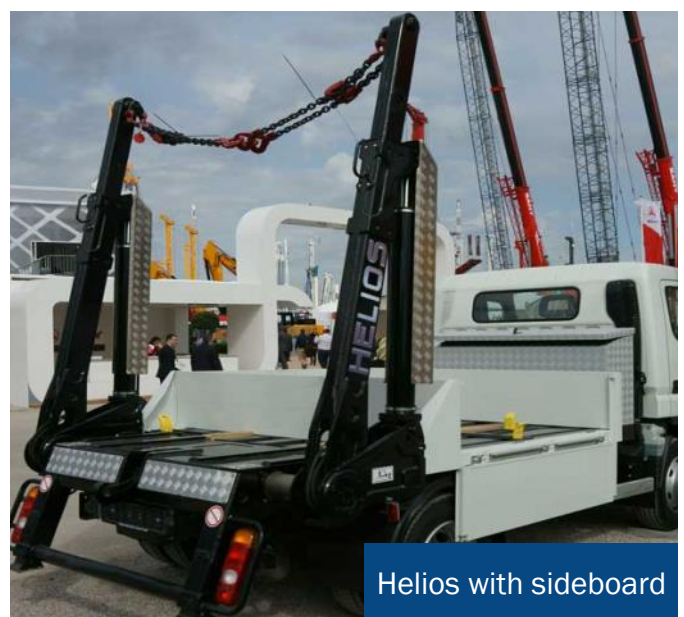
HELIOS 8-13

Can accommodate DIN 30 720 skips up to 10 m³ (due to the horizontal displacement of the arms).

Side loading directly onto the tipper (e.g. with forklift truck, pallets as the hydraulic cylinder of the Helios type runs parallel to the arm).



Helios 8 Standard



Helios with sideboard



Helios with loading crane



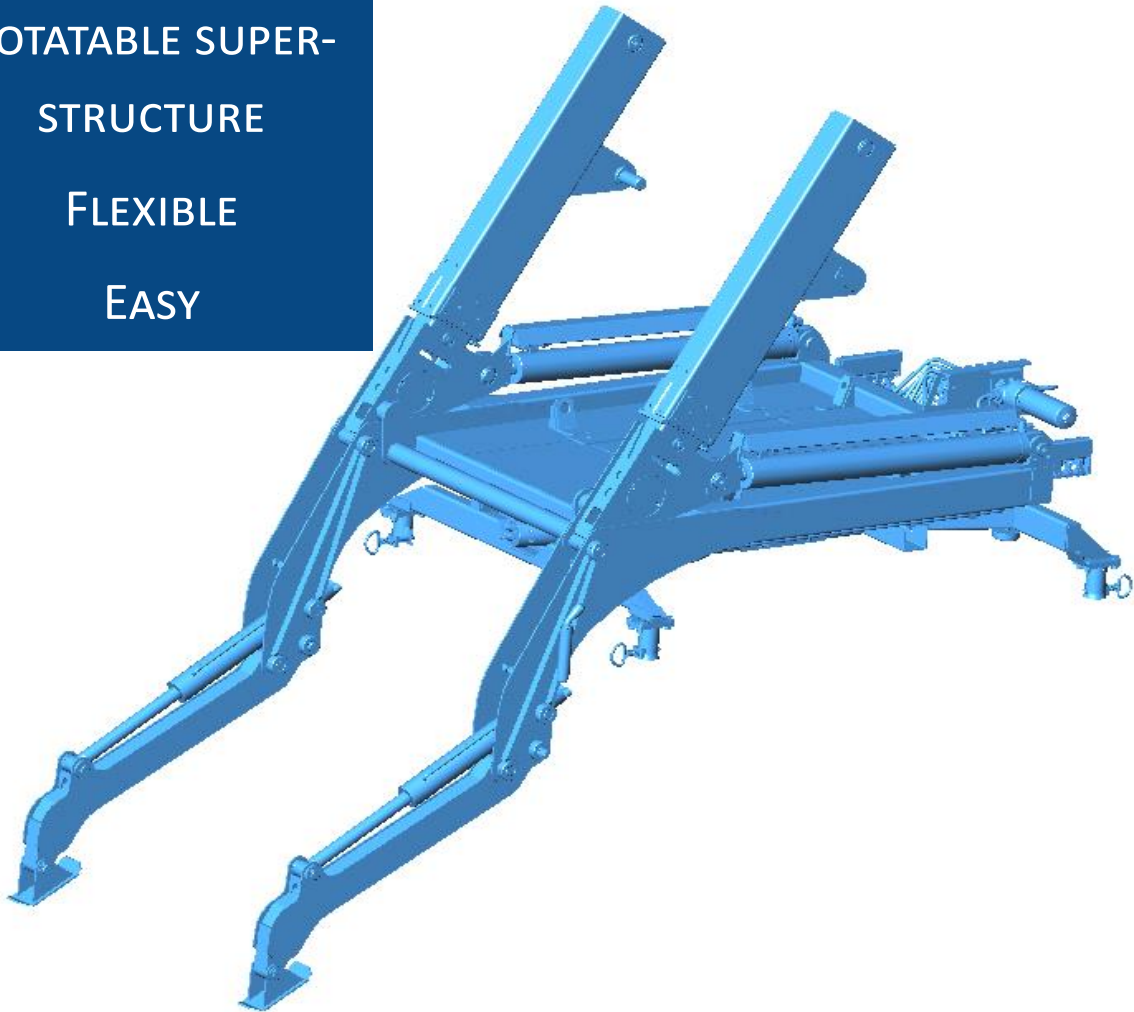
Helios with high storage box

TAK 4 SW

ROTATABLE SUPER-
STRUCTURE

FLEXIBLE

EASY



After setting down the container, the vehicle is available for transport again (no set-down Skip loader necessary for work with containers/platforms).

Ideal for transporting construction machinery (mini-excavators), green cuttings, leaves, building materials, etc.

Several platform bodies/tippers can now be replaced by just one GERGEN City skip loader.

UNLIMITED POSSIBILITIES



GERGEN 
Kipper- und Fahrzeugbau

THE GERGEN NAVIGATOR CONTROLLERS

The GERGEN Navigator controls impress with their ease of operation and create unrestricted mobility when operating the superstructure.

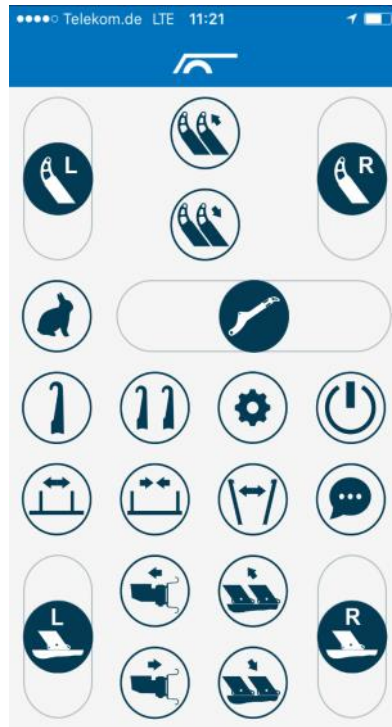
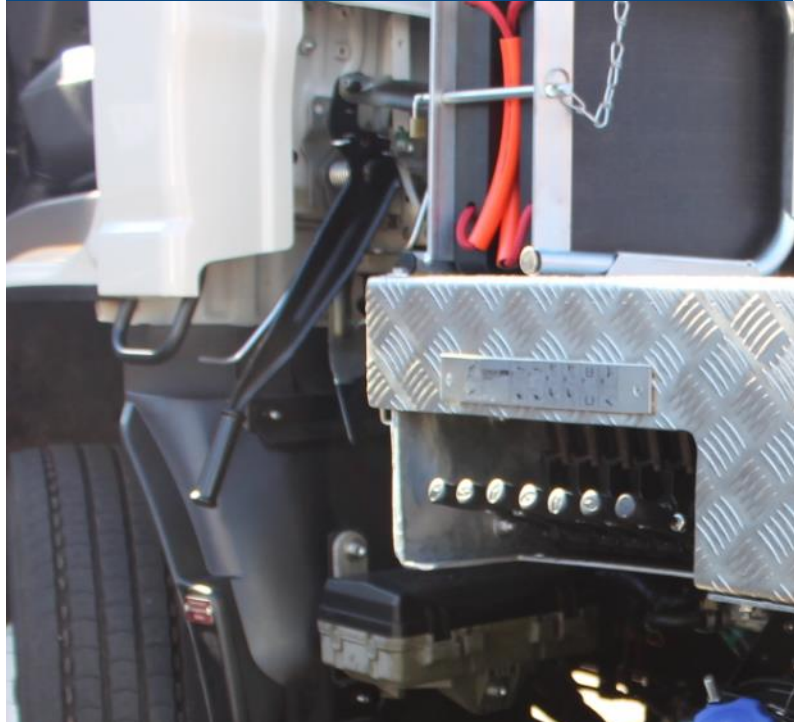
Changing requirements demand modern and innovative products...

.... WE ARE PREPARED FOR THE FUTURE!

RADIO NAVIGATOR CONTROL



Additional outside contro as standard



GERGEN 
Kipper- und Fahrzeugbau

GERGEN Kipper- und Fahrzeugbau GmbH

Geistkircher Str. 14

66386 St. Ingbert

Phone: +49 (0) 6894 9203-0

Fax.: +49 (0) 6894 9203-119

Mail: welcome@gergen-kipper.de

Web: www.gergen-kipper.de

Follow us:



GERGEN



Kipper- und Fahrzeugbau